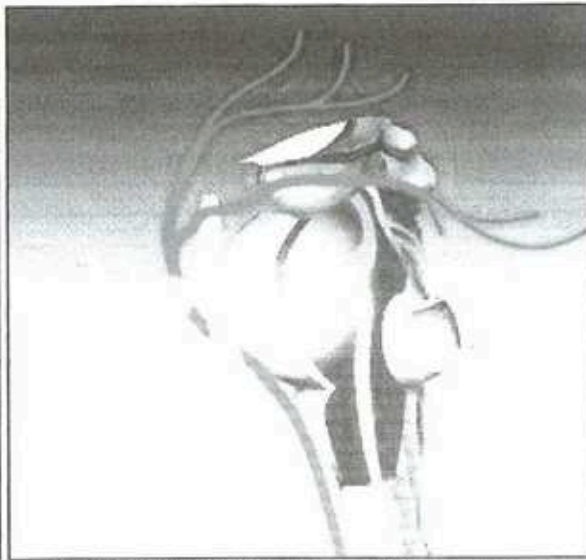
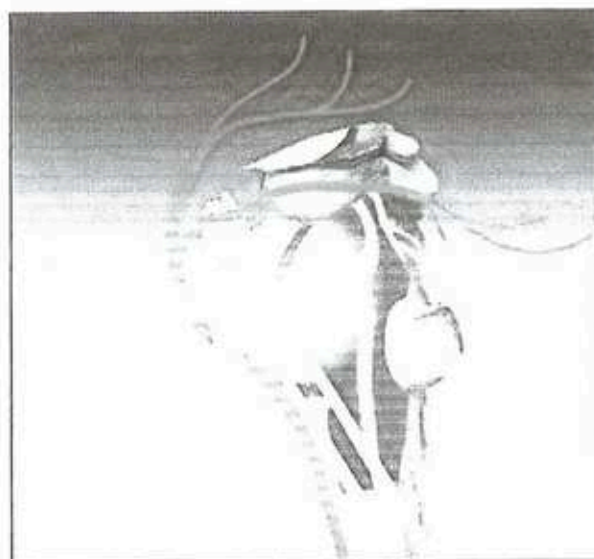


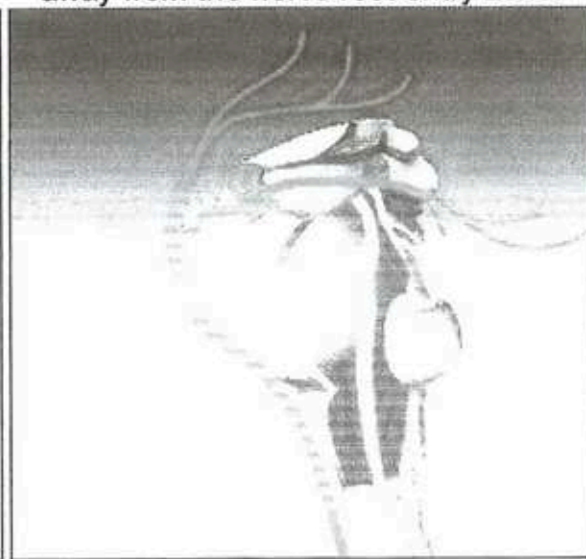
Prior to MVD.



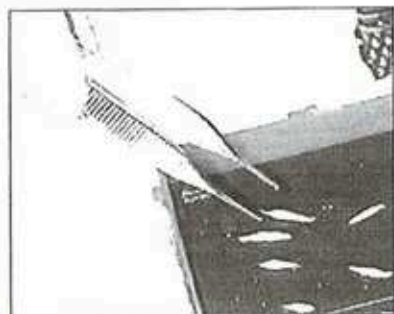
During MVD, the vessel is mobilized away from the nerve root entry zone.



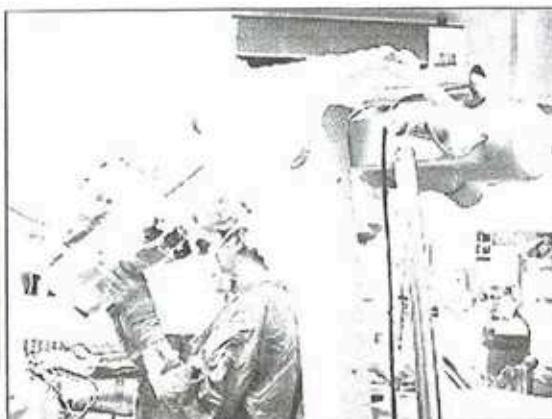
The decompression is maintained with shredded Teflon® felt implants.



MVD has resulted in permanent alleviation of the neurovascular compression.



Inert shredded Teflon® felt implants.



Operating microscopes

geïmplantoord

Houssa

hersensstam en
r. vertebrales slagader

Zonder informatie e zonder toestemming